

Global Processing and Products from MERIS Full Resolution Data for the Coastal Zone

User Consultation Meeting 3

NRT Service

Uwe Krämer, Marco Peters,
Carsten Brockmann

19.-21.10.2011

Lisbon, Portugal



CoastColour

Objectives

- Demonstration of NRT processing and dissemination of CaostColour Products
- All 27 sites
- Continues operation, delivery within 24h after aquisition
- Duration 6 months
- L1P, L2R, L2W

Algorithms included

- L1P ... consolidated
- L2R ... stable
- L2W ... generic neural network (prototype)

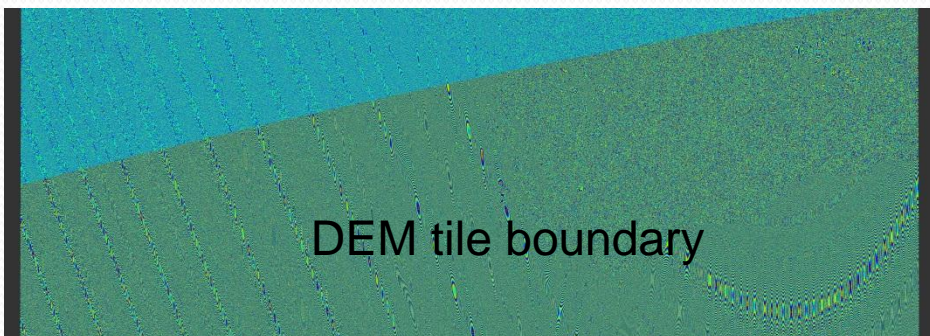
- L2W algorithm will change during the demonstration service!

Geolocation improvement with AMORGOS

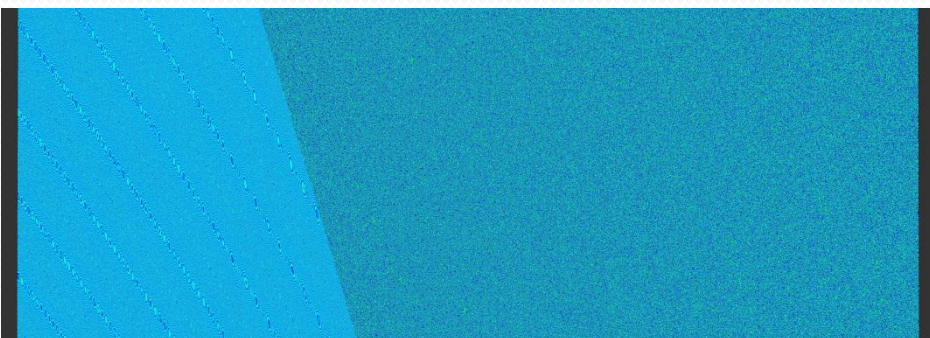
- Best performance of AMORGOS requires restituted orbit state vector
 - Not available in NRT
 - predicted OSV instead
 - predicted OSV available at 02:30 next day
 - Difference in the order of a few meters at max



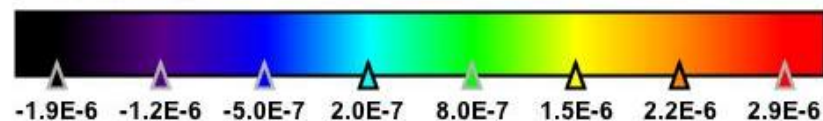
RGB 20080316



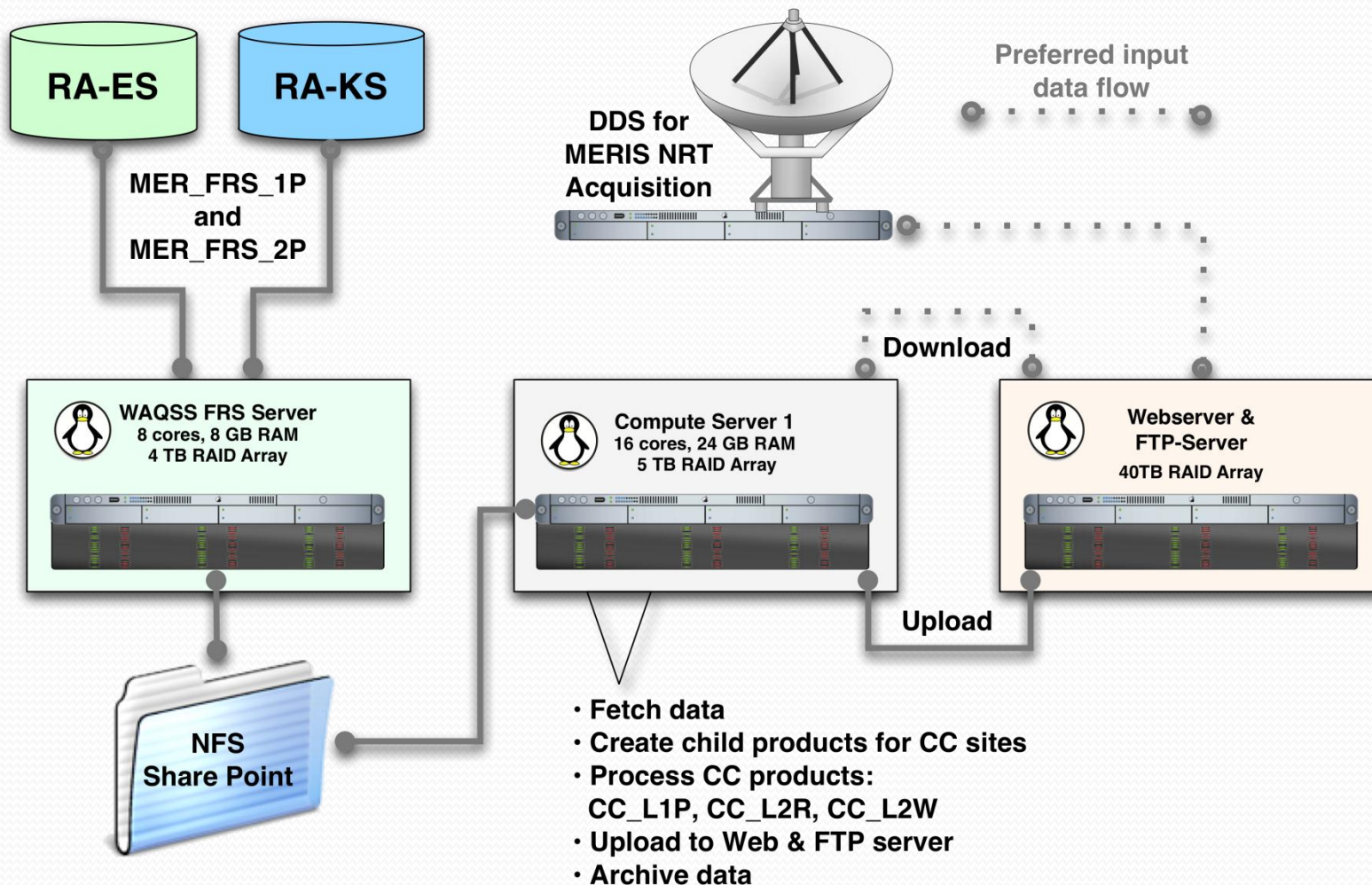
Latitude difference



Longitude difference



CC NRT Data Flow

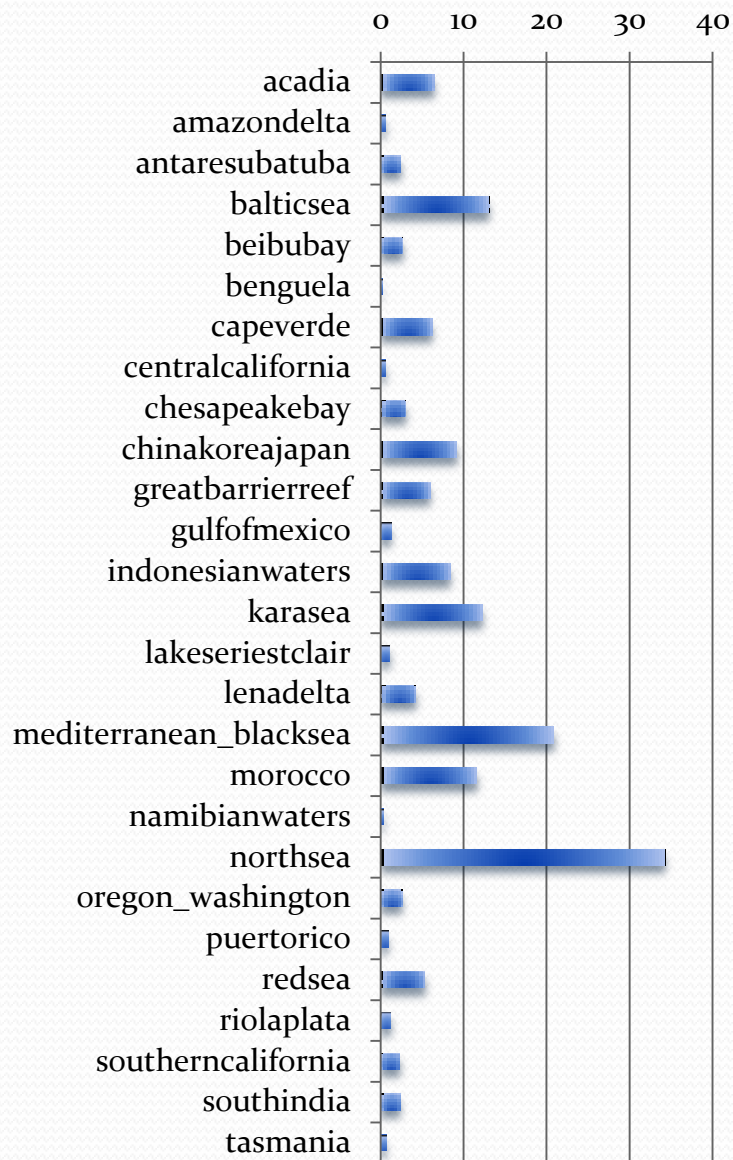
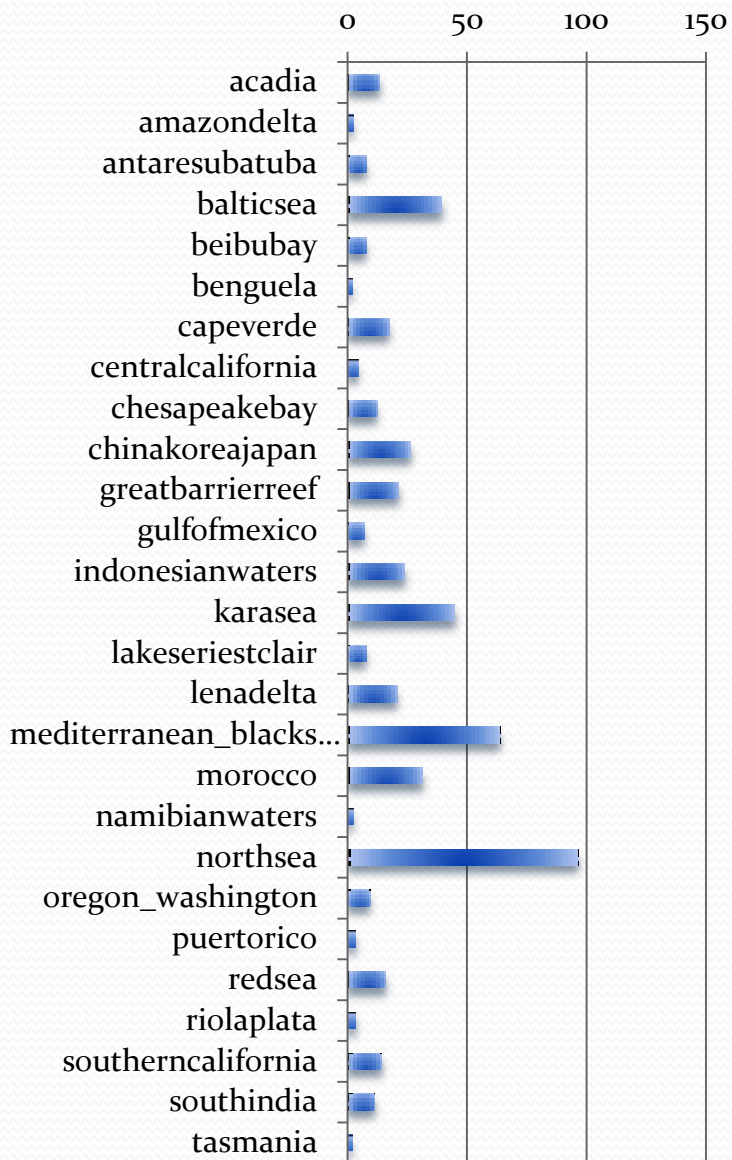


Data Throughput

- Time frame 2 weeks (01.10. – 14.10.2011)
- Input: 983GB, 1707 FRS products
 - Daily estimated: 70GB / 122 products
- Output:
 - 320 GB FRS child products , 23GB / day
 - 333 GB L1P (compressed 226GB, 16GB/day)
 - 960 GB L2R (compressed 816GB, 58GB/day)
 - 640 GB L2W (compressed 442 GB, 32GB/day)

products / week

GBytes / week



Dissemination

- Background Information on CoastColour Website
- HTTP access through Website
 - Directly accessible
- FTP access
 - Request Email to office@coastcolour
 - No restriction on who gets access



Contents

[NRT Service](#)

[Data Archive](#)

[Product Description](#)



Products

NRT Service

The Near Real Time (NRT) Service provides CoastColour data products processed to L1P and L2 as soon as the MERIS FRS L1B is made available by ESA. After a product has been processed it will remain available online for 2 weeks.

The access to the data NRT data is free and open. You can use the direct web access, which is good for downloading only a few data products. If you like to download more than just a couple of products, we kindly ask you to register for getting access to the FTP server. After registration, which is free of charge, a username and password will be sent to you.

- [Direct Web Access](#)
- [Register for FTP access](#)

Data Archive

The CoastColour data archive contains, for all 27 sites and for the years 2005 to 2009, L1P data products. For 2006 also L2R and L2W data products are available. For the sites Benguela (Site 10), ChinaKoreaJapan (Site 11), and Rio La Plata (Site 27) L2 data is available processed with especially trained algorithms for high TSM and standard TSM.

Index of /data/nrt

[Name](#) [Last modified](#) [Size](#) [Description](#)

[Parent Directory](#)

- [acadia/](#)
- [amazonc](#)
- [antaresul](#)
- [balticsea](#)
- [beibubay](#)

Index of /data/nrt/morocco

[Name](#) [Last modified](#) [Size](#) [Description](#)

Index of /data/nrt/morocco/MER_FRS_CCL1P

[Name](#) [Last modified](#) [Size](#) [Description](#)

[Parent Directory](#)

- [MER](#)
- [MER](#)
- [MER](#)
- [MER](#)
- [MER](#)
- [MER](#)

Index of /data/nrt/morocco/MER_FRS_CCL2W

[Name](#) [Last modified](#) [Size](#) [Description](#)

[Parent Directory](#)

	MER FRS CCL2W 20111012 121116 00000763107 00282 50296 0001.nc	14-Oct-2011 06:59	636M	
	MER FRS CCL2W 20111012 121116 00000763107 00282 50296 0001.nc.gz	14-Oct-2011 07:01	377M	
	MER FRS CCL2W 20111013 113049 000001043107 00296 50310 0001.nc.gz	15-Oct-2011 17:29	465M	
	MER FRS CCL2W 20111013 113053 000001043107 00296 50310 0001.nc.gz	15-Oct-2011 20:53	467M	
	MER FRS CCL2W 20111013 113157 000001913107 00296 50310 0001.nc.gz	15-Oct-2011 19:10	935M	
	MER FRS CCL2W 20111013 113431 000000993107 00296 50310 0001.nc.gz	15-Oct-2011 19:57	445M	

- [southindia/](#) 14-Oct-2011 13:58 -
- [tasmania/](#) 14-Oct-2011 14:57 -



Contents

NRT Service

Data Archive

Product Description



Products

NRT Service

The Near Real Time (NRT) Service provides CoastColour data products processed to L1P and L2 as soon as the MERIS FRS L1B is made available by ESA. After a product has been processed it will remain available online for 2 weeks.

The access to the data NRT data is free and open. You can use the direct web access, which is good for downloading only a few data products. If you like to download more than just a couple of products, we kindly ask you to register for getting access to the FTP server. After registration, which is free of charge, a username and password will be sent to you.

- [Direct Web Access](#)
- [Register for FTP access](#)

Data Archive

The CoastColour data archive contains, for all 27 sites and for the years 2005 to 2009, L1P data products. For 2006 also L2R and L2W data products are available. For the sites Benguela (Site 10), ChinaKoreaJapan (Site 11), and Rio La Plata (Site 27) L2 data is available processed with especially trained algorithms for high TSM and standard TSM.

Visit of the Server

Dear User, thanks for your interest in our products. Prior to connection to our ftp server, we would kindly request you to fill out the following fields. Login data (user name and password) will be sent to you by email accordingly.

If you have already registered, please use the following link for connection to our ftp server: [FTP Server](#)

First Name:

Last Name:

My eMail:

My Institution:

Why do you want to access the data? (max 120 letters)



Site7.

Oregon and Washington

This question is for testing whether you are a human visitor and to prevent automated spam submissions.

What code is in the image?

Please, type the four characters shown in the image.



NRT Service is available NOW

www.coastcolour.org/data/nrt

MERCI 2.0 Search Interface

- Access to CoastColour NRT & archived data
- Zoomable map
- Bulk download
 - Full products
 - Subsetting on user defined area
 - ftp delivery
 - RSS notification on processing status

Query Products

Region

User Defined

Rectangle

North Lat (dec.Deg.) 63.984375

South Lat (dec.Deg.) 50.34375

West Lon (dec.Deg.) -5.203125

East Lon (dec.Deg.) 12.796875

Select Globe

Time Range

Start Date 2002-05-01

End Date 2005-05-15

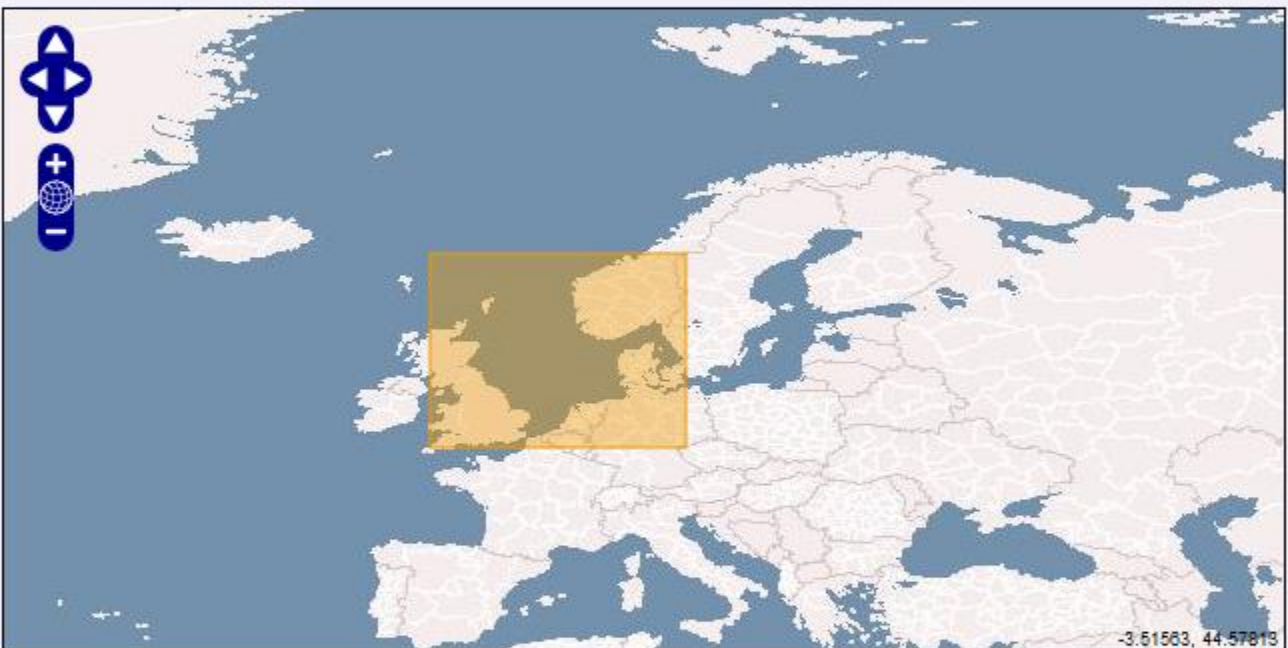
Type Info

Product Type MER_RR__1P

Select multiple Types

Subset Scene

Expand to Advanced



Press SHIFT key and simultaneously start drawing your Region Of Interest with the mouse holding left key pressed.

Submit Query 25 Results New Query

No results match your query.

Query Products

Region

User Defined

Rectangle

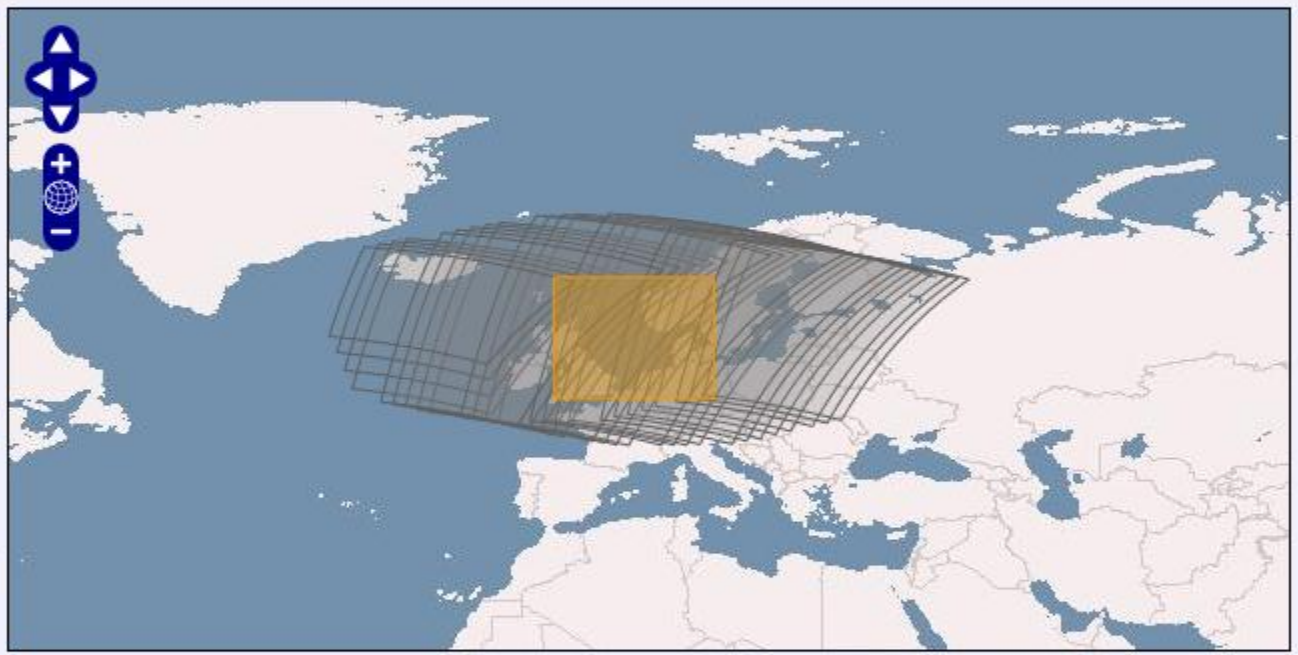
North Lat (dec.Deg.) 63.984375

South Lat (dec.Deg.) 50.34375

West Lon (dec.Deg.) -5.203125

East Lon (dec.Deg.) 12.796875

Select Globe



Time Range

Start Date 2005-05-01

End Date 2005-05-15

Type Info

Product Type MER_RR__1P

Select multiple Types

Subset Scene

Press SHIFT key and simultaneously start drawing your Region Of Interest with the mouse holding left key pressed.

Submit Query 25 Results New Query

Expand to Advanced

Result Page 1 2

Results 1 - 25 of 28 matching products. (0.149 seconds)

select	#	Preview	Product Name
<input type="checkbox"/>			

Merci Product Query

End Date 2005-05-15

Type Info

Product Type MER_RR__1P

Select multiple Types

Subset Scene



Press SHIFT key and simultaneously start drawing your Region Of Interest with the mouse holding left key pressed.

Submit Query 25 Results New Query


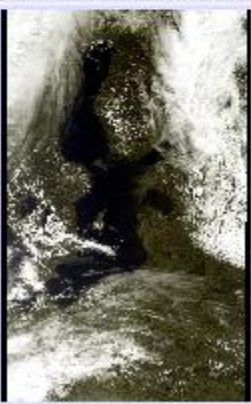
Expand to Advanced

Result Page 1 2

Results 1 - 25 of 28 matching products. (0.149 seconds)

select	#	Preview	Product Name
<input type="checkbox"/>	1		MER_RR__1PRMAP20050501_093744_000003242036_00480_16566_0001.N1
<input type="checkbox"/>	2		MER_RR__1PRMAP20050501_111752_000003632036_00481_16567_0001.N1

Merci Product Query +

<input type="checkbox"/>	23		MER_RR__1PRMAP20050513_100023_000003892037_00151_16738_0001.N1
<input type="checkbox"/>	24		MER_RR__1PRMAP20050513_114111_000003242037_00152_16739_0001.N1
<input type="checkbox"/>	25		MER_RR__1PRMAP20050514_092911_000003102037_00165_16752_0001.N1

Result Page **1** 2

Select All

Download Selected Results

Order Bulk Download via FTP

Define FTP Order

Order Options

Tailor products to region of interest (ROI)

Total order size: 1.15 GB

All products in one big zip file

Max file size per zip file: GB (max: 30)

Max number of products per zip file: Count (max: 730)

Order Name:

*

* ... mandatory field

Finish Order

Matching products

28

Query Parameters

Rectangle ROI

latNorth 63.984375

latSouth 50.34375

lonWest -5.203125

lonEast 12.796875

Time Range

startDateString 2005-05-01

endDateString 2005-05-15

Product Type Info

productTypes MER_RR__1P

Scene/Orbit Scene

Manage User Requests

merci

version 2.0.0 - user bc - 2011-10-18 14:55

[Home](#) | [Query Products](#) | [Query Sites](#) | [Product Orders Manager](#) | [Product Manager](#) | [System Check](#) | [Access Statistic](#) | [User Manager](#) | [Site Manager](#) | [Change Password](#) | [RSS](#) | [Logout](#) | [Help](#) | [Administration Help](#)

Manage Product Orders

Refresh

Submit

Delivery Method	Description / Name		Cancel
Creation Date	Status	Message	Delete
FTP	NorthSea1		
18-10-11 14:55	RUNNING	Adding subset 1 of 28 to archive	<input type="checkbox"/> cancel
FTP	cbtest		<input type="checkbox"/> delete
17-10-11 08:47	FINISHED		
FTP	alödksfjalöskdf		<input type="checkbox"/> delete
14-10-11 13:43	FINISHED		

Submit

Manage Product Orders

Refresh Submit

Delivery Method	Description / Name		Cancel
Creation Date	Status	Message	Delete
FTP	NorthSea1		
18-10-11 14:55	RUNNING	Adding subset 6 of 28 to archive	<input type="checkbox"/> cancel
FTP	cbtest		<input type="checkbox"/> delete
17-10-11 08:47	FINISHED		
FTP	alödksfjalöskdf		<input type="checkbox"/> delete
14-10-11 13:43	FINISHED		

Submit

merci

version 2.0.0 - user bc - 2011-10-18 19:14

[Home](#) | [Query Products](#) | [Query Sites](#) | [Product Orders Manager](#) | [Product Manager](#) | [System Check](#) | [Access Statistic](#) | [User Manager](#) | [Site Manager](#) | [Change Password](#) | [RSS](#) | [Logout](#) | [Help](#) | [Administration Help](#)

Manage Product Orders

Refresh

Submit

Delivery Method	Description / Name	Cancel
Creation Date	Status	Message
FTP	NorthSea1	<input type="checkbox"/> delete
18-10-11 14:55	FINISHED	
FTP	cbtest	<input type="checkbox"/> delete
17-10-11 08:47	FINISHED	
FTP	alödksfjalöskdf	<input type="checkbox"/> delete
14-10-11 13:43	FINISHED	

Submit

Thank you for your attention