



Planning of the 2nd Year (and beyond)

A vertical banner on the right side of the slide features a globe at the top, a satellite-style map of a coastline, and a semi-transparent white box containing the text "CoastColour".

CoastColour

Overview 2011

- Round Robin
 - Today: Release Round Robin Data Package
 - January & April 2011: Users to send back products
 - September 2011: Round Robin Report
 - December 2011: Case2 Algorithm Protocol
- Algorithm Development
 - March 2011: Completion of water processors implementation
 - April 2011: Validation and decision on final design
- Product and Software Releases
 - January/February 2011: Level 1P on ftp
 - June 2011: Level 2
 - July 2011 – December 2011: NRT service
- User Interactions
 - December 2010, Spring and Summer 2011 Newsletters
 - March 2011: Webportal 2.0 with download of data
 - 19. - 21. October 2011: User Consultation Meeting in Lisbon

Product and Software Releases

- **MERIS Radiometric Correction Tool**

- Release with BEAM 4.9
- December 2010
- Functions:
 - 2nd to 3rd reprocessing recalibration
 - smile correction
 - coherent noise reduction
 - radiance to reflectance (TOA) conversion

- **CoastColour L1P Products**

- Release January / February 2011
- data from 2005 – 2009 over 27 sites
- Geometrically precise
- Radiometrically corrected
- Pixel classification flags

- **Standard Processing L1 and L2 Products**

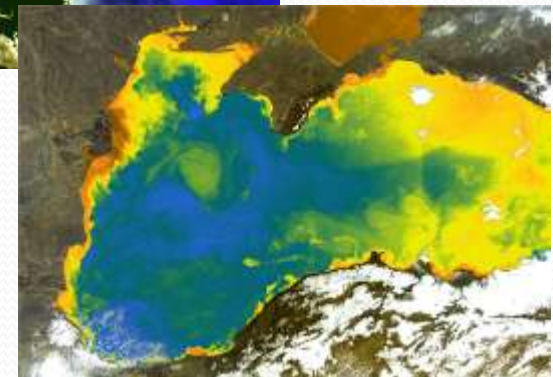
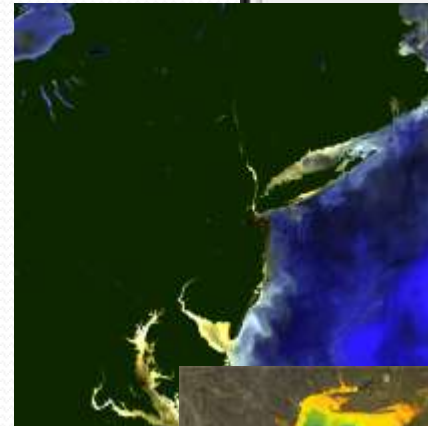
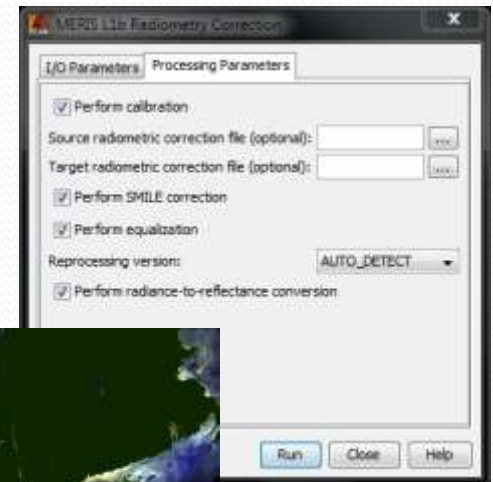
- March 2011 (depending on ODESA)

- **CoastColour L2 Products**

- Release June 2011

- **NRT Service**

- June 2011 – December 2011





News

November 2010
Program of UCM available

November 2010
Report available

July 2010
Newsletter 1 available

17./18. February 2010
COASTCOLOUR presentation at SAFARI Remote Sensing and Fisheries International Workshop in Kochi, India

16.-17. 11. 2010
User Consultation Meeting
ESRIN, Frascati, Italy



Software and Production
More than 35TB of MERIS FRS products from coastal zone will be processed using BEAM Technology. The software will be under the GNU Public License.



The COASTCOLOUR Project

The European Commission's MERIS Full Resolution (300m) data is derived from the MERIS Full Resolution (300m) data. COASTCOLOUR algorithms are being developed and discussed.



User profile: Susanne Kratzer, Stockholm University, Sweden

Dr Susanne Kratzer is Associate Professor at Stockholm University and coordinator of the Nordic Network in Aquatic Remote Sensing. Her current research focus is on water quality studies of the Baltic Sea, using remote sensing and bio-optical methods, and supporting the development of an operational remote sensing system.



Coastal Water Challenges

The task of retrieving water optical properties and concentrations from reflections spectra in coastal waters is a complex matter. In contrast to case 1 water, where by definition, only 1 component determines the variability of the water leaving radiance reflectance, ...



COASTCOLOUR products

Coastcolour will process all available MERIS Full Resolution (300m) of the champion user test sites (and possibly more). The coastcolour products will include a set of basic quantities which will be generated over all sites (TOA radiances, water leaving reflectances, IOPs and concentrations) ...

Please send us your user profile
office@coastcolour.org

The test sites.

In the description below it should be recognised that a given site is likely to have a wide range of oceanographic and hence optical characteristics and the user interest may be focussed on one small part.

- Site 1: North Sea, English Channel, Bay of Biscay, Celtic Sea
- Site 2: Baltic
- Site 3: Complete Mediterranean & Black Sea
- Site 4: Morocco (Atlantic and Mediterranean coasts of Africa)
- Site 5: Acadia
- Site 6: Chesapeake Bay
- Site 7: Oregon and Washington
- Site 8: Plumes & Blooms
- Site 9: Puerto Rico
- Site 10: Benguela
- Site 11: China, Korea, Japan
- Site 12: Great Barrier Reef
- Site 13: Red Sea
- Site 14: Indonesian Waters
- Site 15: Beibu Bay
- Site 16: Namibian Waters
- Site 17: Cape Verde





North Sea

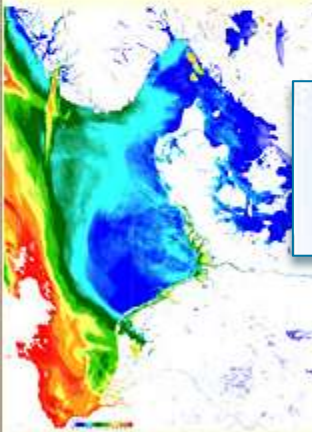
Site 1: NorthSea English Channel etc.

North Sea, English Channel, Bay of Biscay, Celtic Sea, Irish Sea, Southern Brittany

[Site 1 in Google Earth](#)

Download the sample products: | subset:
[LI](#)(500MB) [C2R](#)(2265MB) | [LI](#)(22MB) [C2R](#)(215MB)

Standard products	Experimental products	Responsible partner
<ul style="list-style-type: none"> • Surface reflectances • Inherent optical properties • Water constituent concentrations • Water transparency/turbidity information • Chlorophyll Indices 	<ul style="list-style-type: none"> • Turbidity in Formazine units • Primary Productivity or Potential Primary Productivity • Phytoplankton Biomass estimates in gC m⁻³ or gC m⁻² units • Concentrations of some taxonomic of functional groups such as Coccolithophorides, Cyanobacteria etc. 	PML PLYMOUTH MARINE LABORATORY

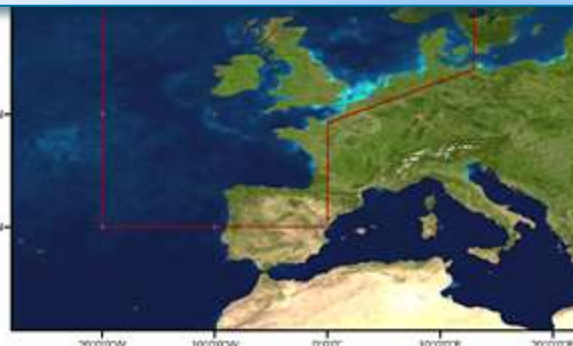


Aerosol optical thickness at 550nm (tau_550)



The North Sea is a large sea with a diverse set of optical properties and

Please send us updated site descriptions!
office@coastcolour.org



Background Image: Blue Marble (c) NASA

Belgian coasts there are high chlorophyll blooms which may cause coastal scum and in the east there have been massive blooms of harmful algae such as *Chattonella* spp. that can threaten fish farms in Norway. Along the coast of Norway the surface outflow from the Baltic containing higher CDOM concentrations can give erroneous chl-a estimates in relatively deep waters. Hence, waters range from case 1 to case 2 with the latter dominated by SPM and/or CDOM. For the North Sea (and English Channel) the best in situ data set is

Query Products

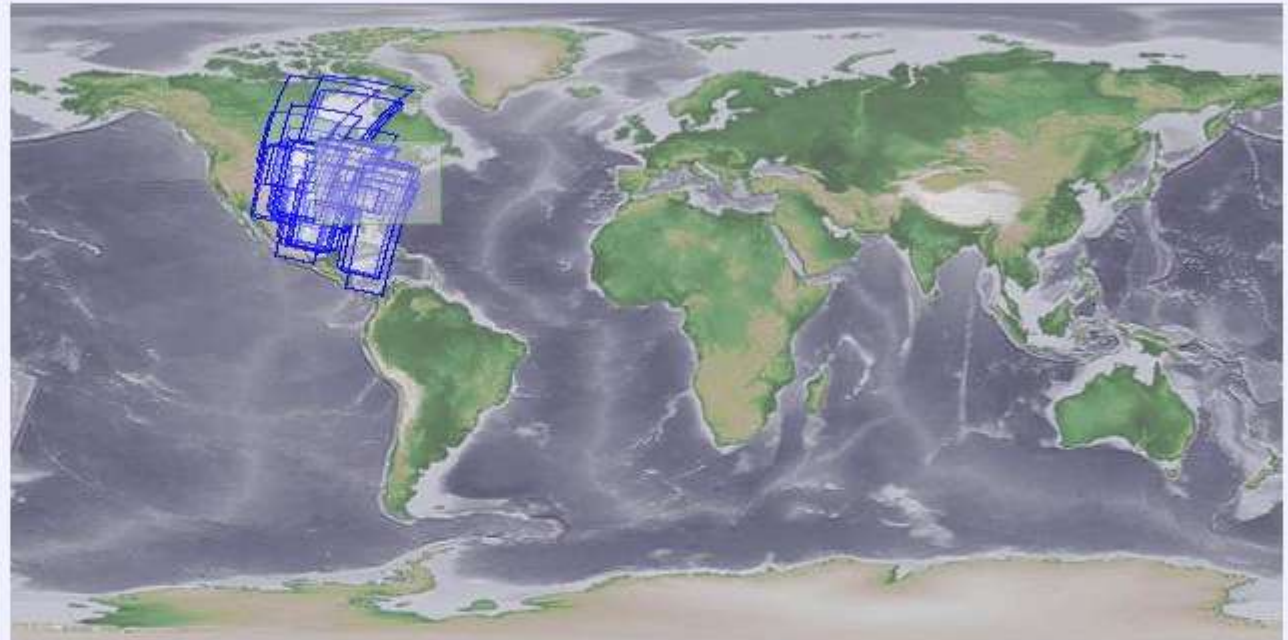
Region

User Defined Rectangle North Lat (dec.Deg.) South Lat (dec.Deg.) West Lon (dec.Deg.) East Lon (dec.Deg.)

Time Range

Start Date End Date

Type Info

Product Type Select multiple Types Subset 100 Results

Results 1 - 59 of 59 matching products. (0.258 seconds)

select	#	Preview	Product Name
<input type="checkbox"/>	1		MER_FRS_1PNUPA20050313_152555_000000252035_00280_15868_0746.N1
<input type="checkbox"/>	-		

Long Term Perspective

- GMES Sentinel 3 Mission
 - Operational ocean colour and altimetry mission
 - MERIS and AATSR follow on instruments
 - improved instruments
 - heritage algorithms and products
 - 2 satellites in orbit
 - OLCI tilted towards west to limit sun glint
 - First launch 2013; mission planned until 2020
- ESA Climate Change Initiative (CCI)
 - Provide Climate Change Data Records
 - Ocean Colour CCI kicked-off August 2010
 - Intentionally excluding the coastal zone because of CoastColour

CoastColour Perspective

- Short Term
 - Express your need for
 - Sites
 - Products
 - Service
 - CoastColour Team would be prepared to extend the activities
- Long Term
 - Sentinel offers the potential to continue CoastColour products
 - Include coastal zone in CCI, but objectives are significantly different from CoastColour!

User Consultation Meeting 2

19.-21. October 2011

Lisbon

www.coastcolour.org
office@coastcolour.org